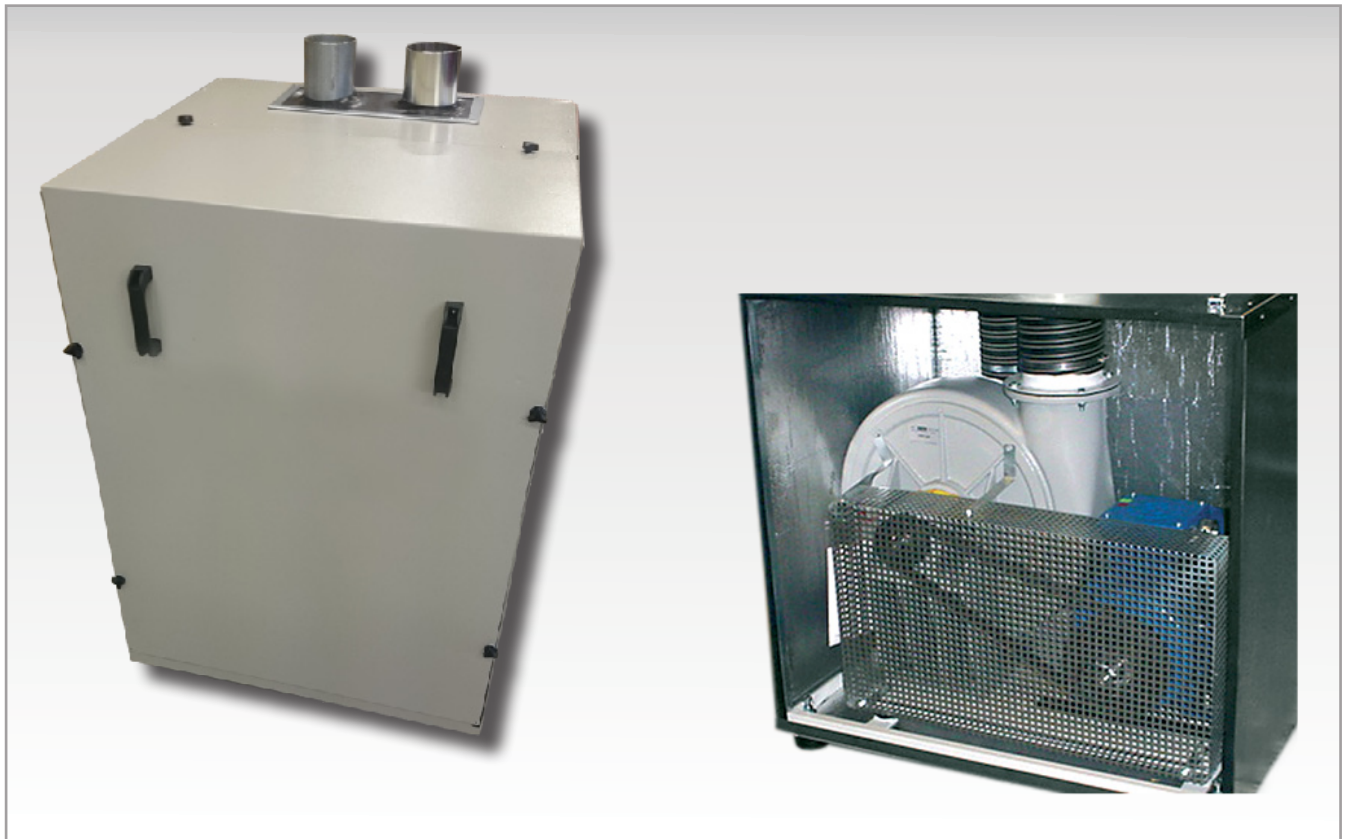


SMPV-L

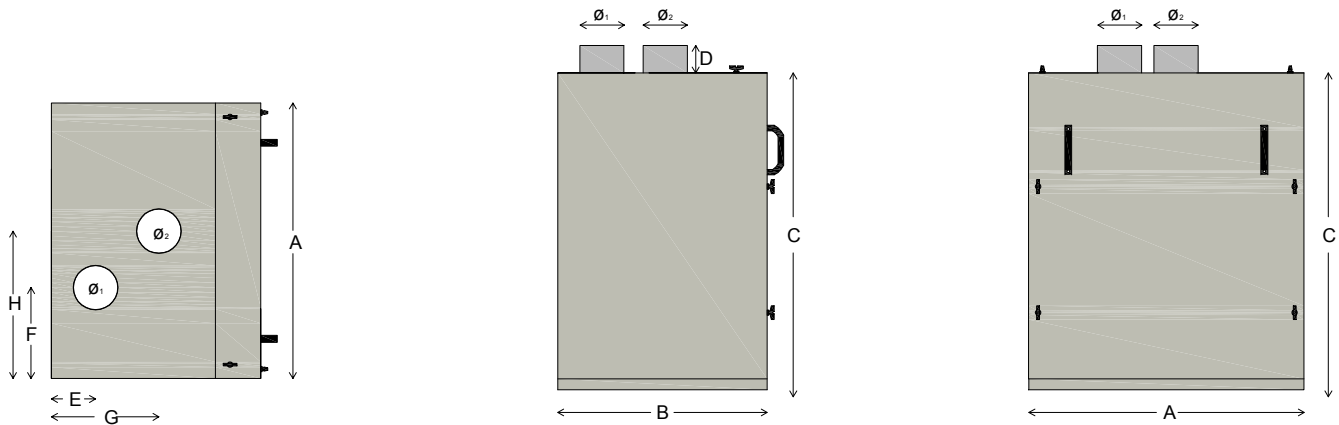


SMPV-L suction unit is a silent suction source for local exhaust from stationary tools and central vacuum cleaning of small workshops. SMPV-L has a belt driven centrifugal high pressure fan and an electrical motor integrated in a sound insulated cabinet of powder coated steel, in color RAL 7044.

The cabinet is equipped with a large inspection door. The fan is mounted on a stand with vibration isolators and provided with belt guard. Inlet and outlet are fitted with flexible connections. The casing is fitted with inlet and outlet openings for cooling air, which cools down the engine. Dust collector must always be placed before the suction unit SMPV-L. Appropriate dust collectors are SDCH-L or SDCC-L. The suction unit may not be used for the extraction of explosive gases or liquids. It is designed for continuous operation and can be placed indoors or outdoors, if it is placed with protection from the weather.

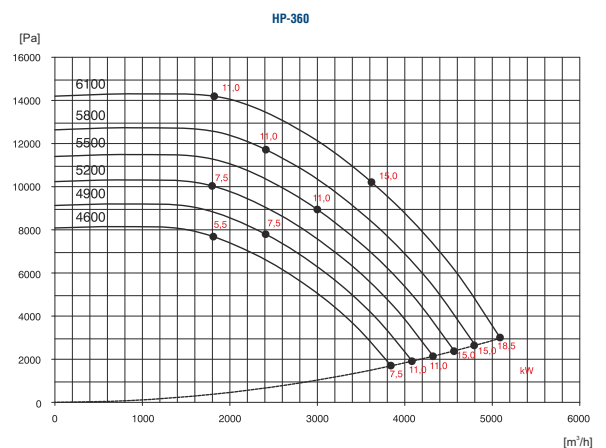
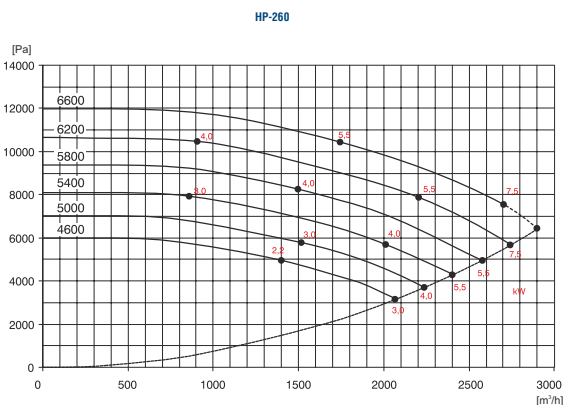
SMPV-L

Technical data



	SMPV-40-L	SMPV-55-L	SMPV-110-L	SMPV-150-L
A (mm)	1000	1000	1000	1000
B (mm)	750	750	750	750
C (mm)	1000	1000	1000	1000
D (mm)	70	70	70	70
E (mm)	160	160	130	130
F (mm)	330	330	290	290
G (mm)	390	390	395	395
H (mm)	535	535	525	525
Ø1 inl. (mm)	160	160	160	160
Ø2 outl. (mm)	160	160	160	160
Motor effect (kW)	4	5,5	11	15
Speed (r/m)	5200	5800	5200	5800
Air flow (m ³ /h)	1500	2000	3000	3500
Fan type	HP-260	HP-260	HP-360	HP-360
Weight (kg)	170	185	250	265

Fan capacity



SMPV-L

Installation and maintenance

ATTENTION!

Isolation switch for the fan should be switched off during all maintenance work on equipment. Use protective gloves, goggles and masks.

Montage

Place the suction unit on a flat, stable surface. The suction unit can be mounted indoors or under protection outdoors. All electrical wiring must be done by a qualified electrician. Wiring must be performed with zero voltage trigger to prevent automatic restart at, for example, power outages. The fan rotation direction is indicated by an arrow. Note that the fan sucks air even rotation is wrong. For cooling the unit, cool air is required. In a well ventilated plant room etc., the existing cold air in the room can be used. For other indoor positioning, the cooling air inlet is connected in some other suitable way. The inlet of the suction unit must be connected to a dust collector, since the fan is not intended for polluted air. The outlet should be fitted with silencers.

Check before starting that:

- all connections are fitted.
- V-belts are correctly tensioned.
- engine protection and safety valve is set correctly.

Regular maintenance

The V-belts should be checked two times per year and tightened or replaced, if necessary. The motor and fan have permanently lubricated bearings and is normally maintenance free.

Troubleshooting Guide for poor suction power:

- The filter unit clogged or dust container overfilled
- Stop or leakage in the piping system
- Too many extraction points open
- Wrong direction of rotation of the fan
- Poorly tensioned belts
- Faulty seals in the inspection doors

Troubleshooting Guide when the motor protection trips:

- Check the motor protection fuses and the size of these.
- Too large quantity of air or too many extraction points open

Declaration of conformity according to EU Directive 2006/42/EC.

Be aware that the unit may not go into service until the machine or the system it is to be included in, complies with the requirements of the EU machinery directive.